

We, the undersigned, owners of the land shown on this map, do hereby consent to the making and filling of same and we hereby dedicate to public use the streets and alleys as shown on this map.

*Edna Wrigg Falk*

*E. J. Jark*

State of California  
County of Stanislaus  
On this 5<sup>th</sup> day of June, 1939, before me, *J. J. King* a Notary Public in and for the County of Stanislaus, State of California, personally appeared known to me to be the persons whose names are subscribed to the within instrument, and they acknowledged to me that they executed the same.

*J. J. King*  
Notary Public, Stanislaus County, Calif.

This is to certify that there are no liens for any unpaid state, county, municipal, irrigation taxes, or special assessments except taxes or special assessments not yet payable, against the land shown on this map.

As to County, School, or State Taxes

Dated *May 1* 1939

*L. J. Hayward*  
County Auditor

As to Irrigation District Taxes

Dated *June 27* 1939

*W. L. Hobson*  
Tax Collector

This is to certify that this map is approved in accordance with the requirements of the Land Subdivision Act of 1937 and Stanislaus County Ordinance Number 148, and as to such matters, it is correct.

Dated *5-8*, 1939

*Geo D Macomber*  
County Surveyor

We, the undersigned, County Surveyor and County Assessor of the County of Stanislaus, do hereby certify that we have examined each and every lot shown on this map, and find the same suitable for residential purposes, and we make no further recommendations.

Dated *5-31* 1939

Dated *May 9*, 1939

*Geo D Macomber*  
County Surveyor

*Lower Garrison*  
County Assessor

I certify that the land shown on the attached map is not subject to any special assessments that have been paid off in full, other than special assessments collected as taxes, but this certificate does not include any assessment district, the bonds of which have not yet become a lien.

Dated *5-8*, 1939

*Geo D Macomber*  
County Surveyor

This is to certify that the land shown on this map, in the County of Stanislaus, State of California, duly acknowledged and certified, as required by law, having been presented to the Board of Supervisors of said County, which Board is the governing body having control of roads, avenues, highways, alleys, lanes, ways, places, in the territory shown on this map, and it is ordered that all roads, avenues, highways, alleys, lanes, ways, places, be rejected, except those heretofore declared to be public highways. Otherwise, this map is approved.

Dated *June 26* 1939

*A. C. Council*  
Chairman Board of Supervisors

This is to certify that the owners of the land shown on this map, have filed a Bond with the Board of Supervisors for the faithful payment of all taxes, which are, at the time of filing of this map, a lien against such tract, or any part thereof.

Dated *June 26* 1939

*A. C. Council*  
Clerk

Approved by the Stanislaus County Planning Commission in accordance with the requirements of law, in duly authorized meeting held *5-8*, 1939.

*W. J. Parker*  
Chairman

Approved by the City of Modesto Planning Commission in accordance with the requirements of law, in duly authorized meeting held *June 6*, 1939.

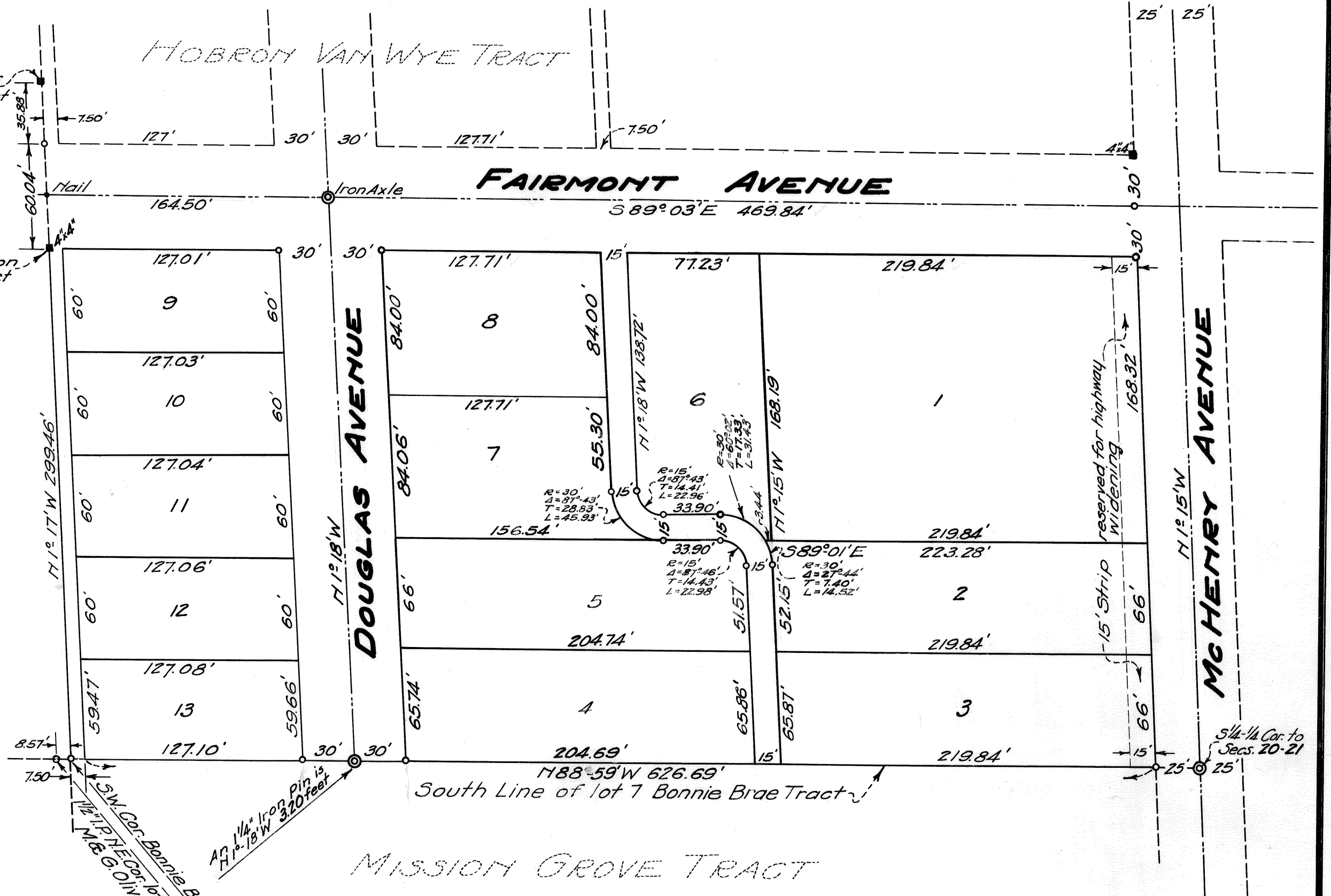
*A. J. Fields*  
Chairman

Approved in accordance with the requirements of law on *May 8* 1939.

*J. J. Prosser*  
City Engineer

I, C. L. Bundy, a duly licensed land surveyor for the State of California, do hereby certify that I have surveyed the land shown on this map, and that said map shows correctly the physical conditions portrayed.

*C. L. Bundy*  
L.S. No. 2092



**FALK TRACT**  
**BEING A RESUBDIVISION OF LOTS 6-7 & A PORTION**  
**OF LOT 5 BONNIE BRAE TRACT**  
**IN S.E. 1/4 OF SECTION 20 T.35.R.9E. M.D.B. & M.**  
**SCALE 1"=60'**  
**MAY 1939**

Basis of Bearings: Line common to Sections 20 & 21. See Map of Bonnie Brae Tract, Vol. 9 of Maps, PAGE 1.  
All lot corners marked with Iron Pipe  
NOTE: Structures facing McHenry Avenue must be set back a minimum of 60 feet from E of street.

7734

Accepted for record and recorded in Vol. 11 of MARS at PAGE 62 in the Office of the County Recorder of Stanislaus County, California, this 5<sup>th</sup> day of July, 1939 at 3:00 P.M.  
*W. J. Waring*  
Recorder of the County of Stanislaus,  
Fee \$5.00 Paid