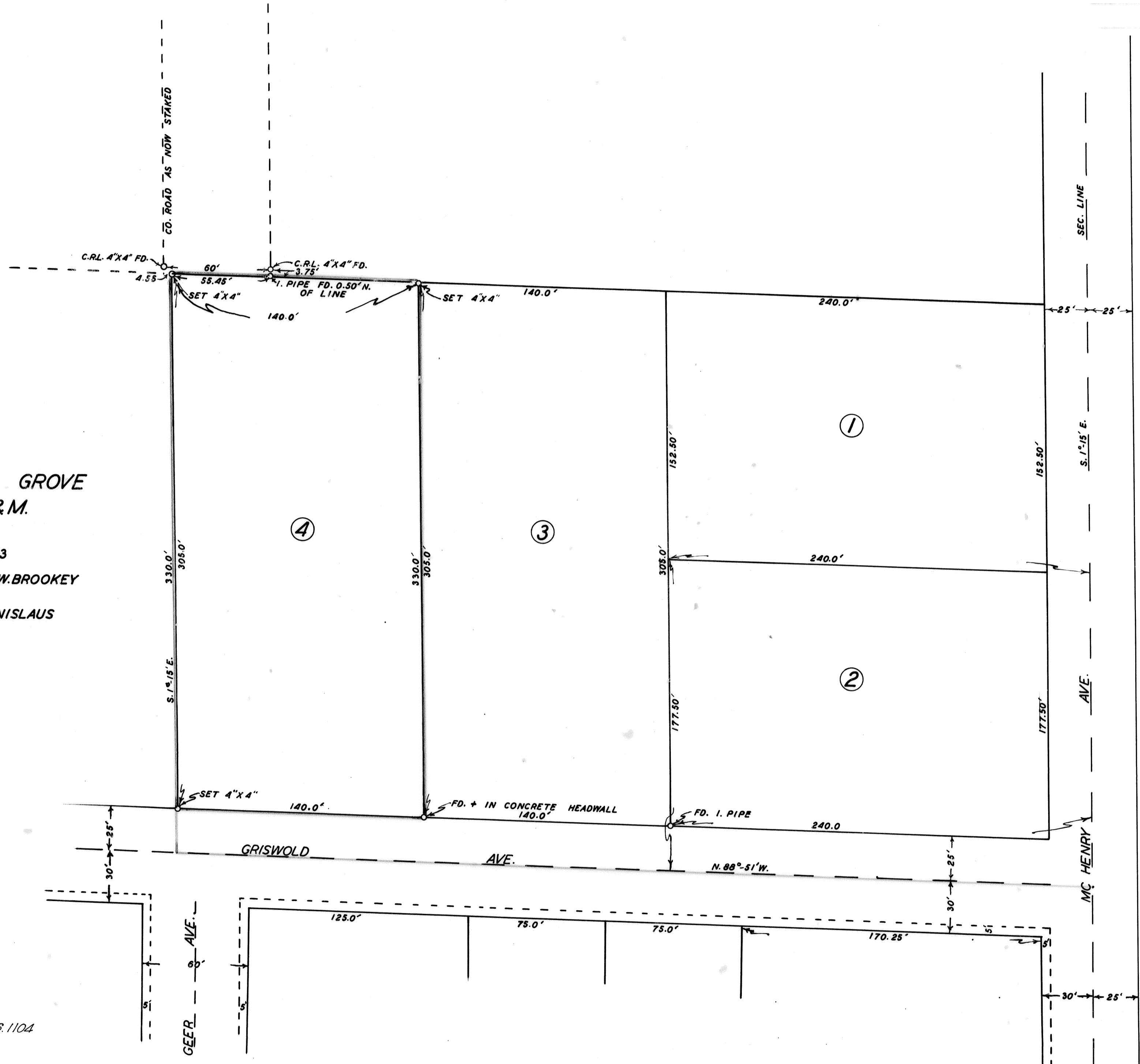




RE-SURVEY OF LOT 4 OF MISSION GROVE TRACT, SEC. 20, T.3S., R.9E., M.D.B.&M.

SCALE 1"=40' W.W. Brookey OCT., 1943
SURVEYED AT REQUEST OF DR. R.E. MAXWELL BY W.W. BROOKEY R.E. NO. 4605
BASIS OF BEARINGS: VOL. 8, PAGE 50 OF MAPS, STANISLAUS COUNTY RECORDER'S OFFICE



No. 1527
Filed for Record at request of
COUNTY SURVEYOR
JAN. 31st A.D. 1944
At 50 Min. Past 11 O'Clock A.M.
RECORD OF SURVEYS
Vol. 3 Page 64
STANISLAUS Co. RECORDS
R.G. Waring Recorder
H.S. Bergstrom Deputy
Fee: 7/00

Approved: Geo. S. Macomber L.S. 1104
County Surveyor