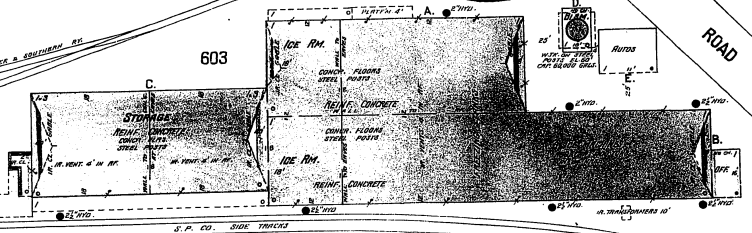


Nov. 1919
MODESTO
CAL.

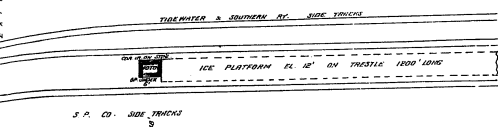
COUNTY ROAD



VALLEY ICE CO.

POWER AND LIGHTS - ELECTRIC. WATER FROM WELL AND PUMP. HYDRANTS AS SHOWN - 450' W. SIDE - 12" x 12" IN DIAMETER WITH 50' x 12" WELLS ATTACHED TO EACH ON ICE PLATFORM. NIGHT AND SUNDAY WATCHMAN - WINDING CLOCK, 6 STAIRS, ACIDLY FINISHED.

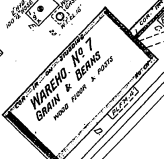
604



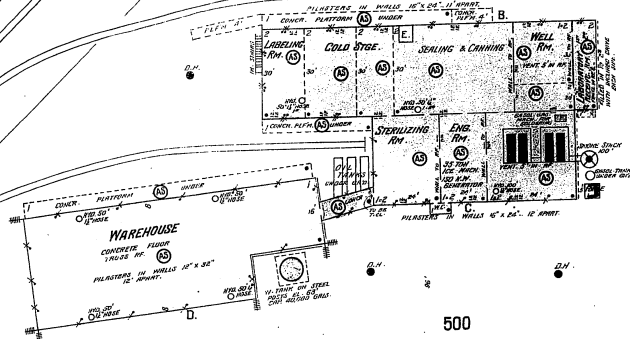
A. B. SHOEMAKE CO.
W. NO. 6
BRICK
CONCRETE FLOOR
TRUSS ROOF

HIGHWAY

THE GRANGE CO.

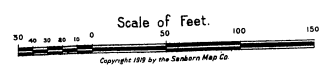
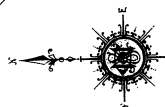


WAREHOUSE NO. 7
BRICK
CONCRETE FLOOR
TRUSS ROOF

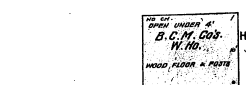


BORDEN CONDENSED MILK CO. OF CALIFORNIA.

POWER - STEAM AND ELECTRICITY. WELL ON ELECTRIC LIGHTS. NIGHT AND SUNDAY WATCHMAN. WINDING CLOCK. 12 STAIRS. ACIDLY FINISHED. CITY AND WELL WATER. HYDRANTS AS SHOWN AND TANK BY SIDE. THE 2 BORDEN HYDRANTS SHOWN FOR FIRE DEPARTMENT. 7 FIRE EXTINGUISHERS. 40 FIRE SADDLES. AUTOMATIC SPRINKLER CO. NET SYSTEM. FIRE SHOWN. BEARS 6" x 12" WELLS AND 12" WELLS. SPRINKLERS AND HYDRANTS ON CITY WATER AND TRUCK.



602



B. C. M. CO.
W. NO. 1
WOOD FLOOR & POSTS

ROAD

KANSAS AV.